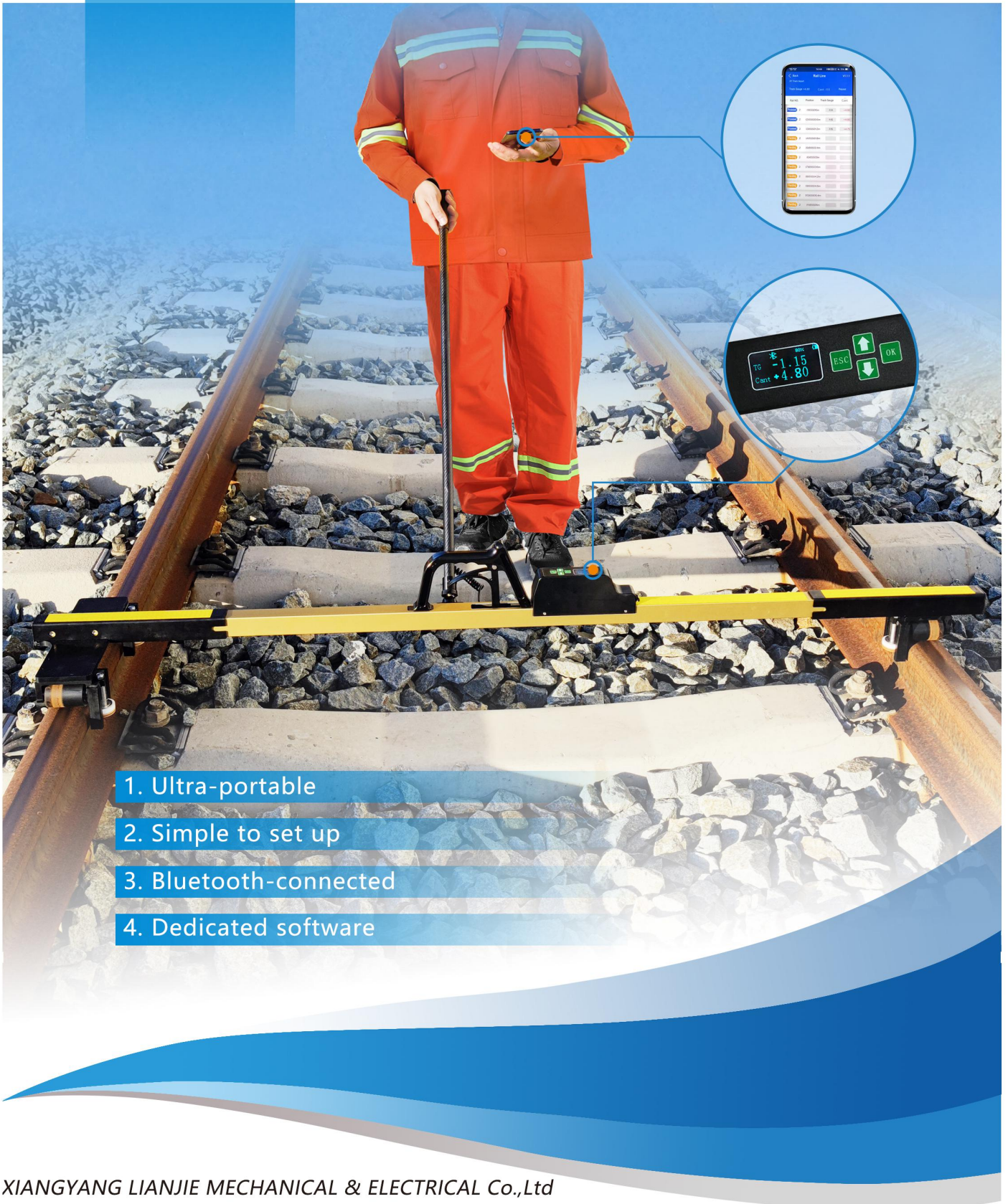




GJC-JJGO

Portable Rolling Track Gauge



1. Ultra-portable
2. Simple to set up
3. Bluetooth-connected
4. Dedicated software

• Introduction :

The Portable Rolling Track Gauge is designed for the measurement of track gauge and super-elevation . The lightweight, reliable and easy-to-use device offers unique measurement accuracy . The software system support for storing and analyzing the measuring data. It can be used for track inspection and rail maintenance. It is easy to carry, and night-time and tunnel work, legible even in direct sunlight are supported which is an ideal measuring tool for track fine-tuning, track construction, inspection and track laying.

• Technical Specification

Model	GJC-JJG0
Track gauge	1410-1470mm
Cant	-185~+185mm
Display mode	OLED display and hand-held terminal display
Supply Voltage	DC3.4V ~ 5.2V (rechargeable battery)
Superelevation division value	0.05mm
Working temperature	-30°C ~ +55°C
Insulation performance	> 1MΩ
Track gauge division value	0.01mm
Superelevation division value	0.05mm
Track gauge max indication error	≤±0.25mm
Superelevation max indication error	≤±0.3mm
Net Weight	≥6.5kg

- All figures based on a standard gauge of 1435mm
- Details for other gauges 1000mm, 1067mm, 1520mm, 1676mm etc and imperial type available on request.

Measurements displayed in 'easy-read' numerical format on APP : Track Gauge; Cant ;

1 Robust and ultra-portable

The device manufactured from aluminium alloy and light weight at about 6.5kg . Conveniently folding it and Stored in a dedicated protective case ,Easy to carry .

2 Simple to set up

The operator can put this device on the track in seconds .It can be operated by one person which saves manpower .

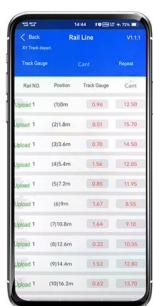
3 Accurate display and storage of measurements.

4 Push rod is equipped with a button, click the button to upload the measurement data to be saved on a Bluetooth-connected smartphone or PDA with dedicated software for easy reading in real-time ,data analysis and track faults discovered .

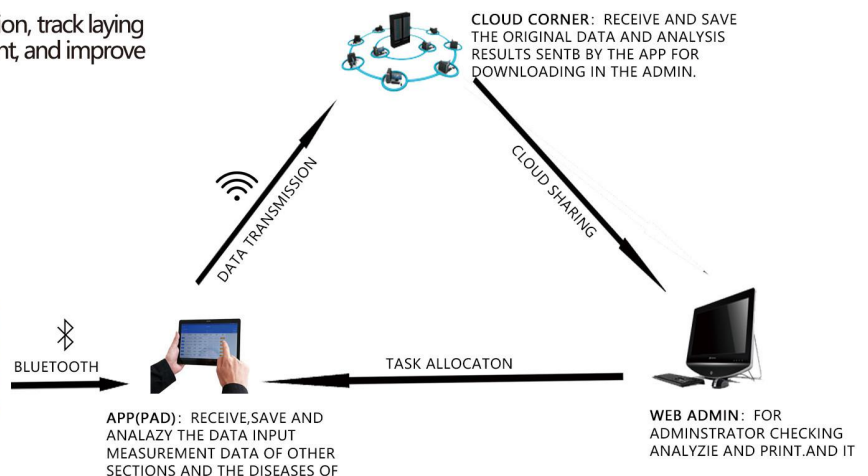
5 -30 to 55 °C operating temperature.

6 Track maintenance, track construction inspection, track laying and other railway operations . it is more convenient, and improve work efficiency.

Rail No.	Position	Dist. MM	T/G Standard	T/G	Level standard	Cant	T/G change rate	T/G	H.L.	Toler	Upload time	Surveyor	Device	Device
1	020m	0	1435	0.06	0	12.50	—	—	—	—	2015-12-21 15:12:30	Feiya		
1	021.8m	1430	1435	0.52	0	12.78	0.25%	—	—	—	2015-12-21 15:12:30	Feiya		
1	023.6m	1430	1435	0.70	0	14.50	0.21%	—	—	—	2015-12-21 15:12:30	Feiya		
1	025.4m	1430	1435	1.56	0	12.05	0.48%	—	—	—	2015-12-21 15:12:30	Feiya		
1	027.2m	1430	1435	0.85	0	11.93	0.39%	—	—	—	2015-12-21 15:12:30	Feiya		
1	029m	1430	1435	1.87	0	8.55	0.48%	—	—	—	2015-12-21 15:12:30	Feiya		
1	030.8m	1380	1435	1.64	0	9.30	0.62%	—	—	—	2015-12-21 15:12:30	Feiya		
1	032.6m	1380	1435	0.32	0	10.55	0.71%	—	—	—	2015-12-21 15:12:30	Feiya		
1	034.4m	1440	1435	1.51	0	12.80	0.67%	—	—	—	2015-12-21 15:12:30	Feiya		
1	036.2m	1420	1435	0.62	0	11.99	0.65%	—	—	—	2015-12-21 15:12:30	Feiya		
1	038m	1430	1435	1.71	0	11.95	0.65%	—	—	—	2015-12-21 15:12:30	Feiya		
1	039.8m	1430	1435	-1.81	0	10.50	1.06%	—	—	—	2015-12-21 15:12:30	Feiya		
1	041.6m	1380	1435	1.18	0	10.45	1.66%	—	—	—	2015-12-21 15:12:30	Feiya		
1	043.4m	1340	1435	1.34	0	9.30	0.99%	—	—	—	2015-12-21 15:12:30	Feiya		



MEASURE TRACK.



marketing@xyljld.com

http://www.linkrailtech.com

Company Add: Sifu Technology Industrial Park No.1 Qilin Road, XiangCheng District ,XiangYang City, Hubei Province, China